

PLASMA CUTTING

The new series of Torches
with High Frequency Start

H-35

LT-50

LT-70

LT-100

LT-120

LT-150

LTE-120 with EASYFIT system

LTE-150 with EASYFIT system

EL-60 with and without High Frequency Start

● Higher performances

● Cleaner cut

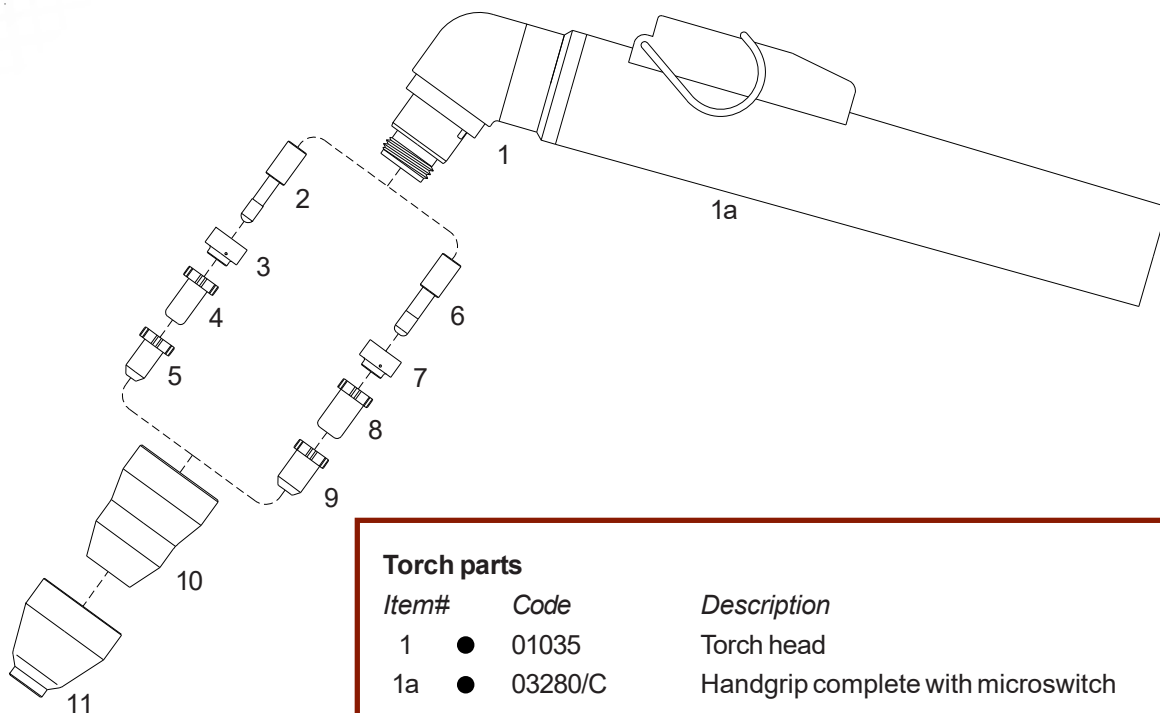
● Faster speed



H35

Technical Data

Max Current : 35 Amps
 Duty Cycle: 35 Amps - 60%
 Gas: Air (clean and dry)
 Gas Pressure: 70-80 psi (4.8-5.5 bar)
 Gas Flow: 190 scfh (90 lpm)
 Post Flow Time : ca 30 sec. recommended
 Pilot : Electrode to Tip
 Ignition: HF



● Standard Layout

Torch parts		
Item#	Code	Description
1	● 01035	Torch head
1a	● 03280/C	Handgrip complete with microswitch
2	● 52519	Electrode - Hf
3	● 60050	Gas distributor
4	● 51290	Tip ø 0.8
	51292	Tip ø 1.2 - Gouging - Grove air
5	51291	Tip ø 0.8 - Drag cut air
6	52523	Electrode, long life - Hf.
7	60051	Gas distributor, long life
8	51288	Tip ø 0.8 - Stand off, long life
9	51289	Tip ø 0.8 - Drag, long life
10	● 60347	Shield cup
11	● 60338	Shield cup

Accessories	
51846	Circle cutting attachment
51803	Cutting guide

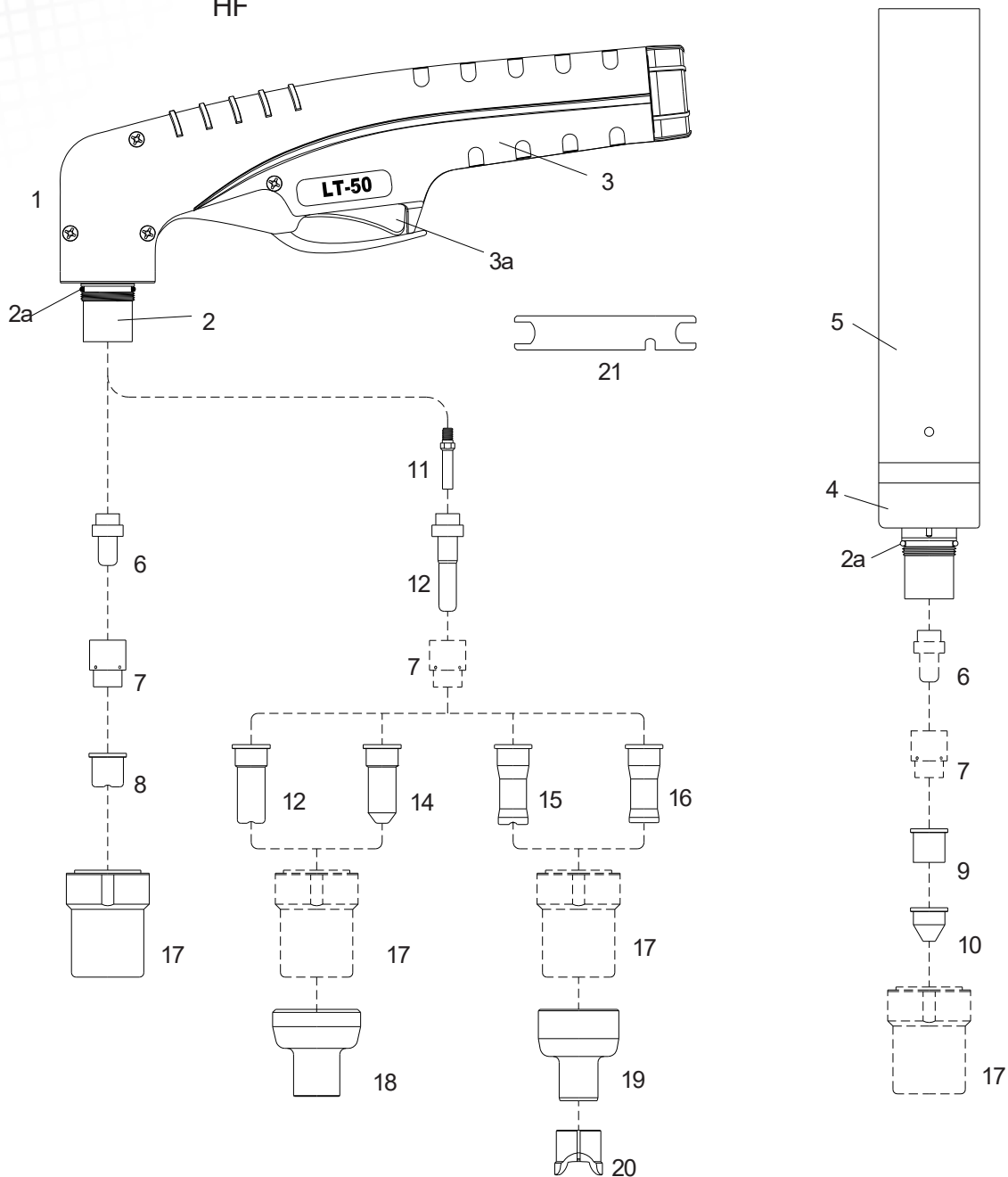
Torches and Leads	
see page # 14	



LT-50 M50

Technical Data

Max Current:	50 Amps
Duty Cycle:	50 Amps - 60%
Gas:	Air
Gas Pressure:	70 psi (4.5-5.0 bar)
Gas Flow:	340 scfh (160 lpm)
Post Flow Time:	30 sec. recommended
Pilot:	Electrode to Tip
Ignition:	HF



● Standard Layout
 H - Hand Torch
 M - Machine Torch



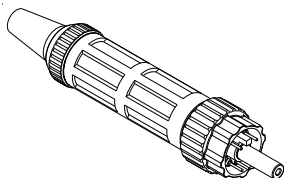
LT-50 M50

Air or N₂

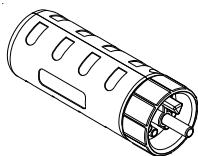
**Air Filter
AT-1000**



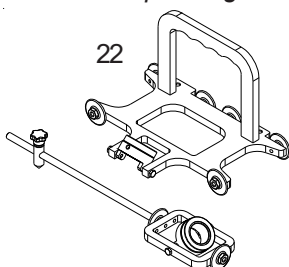
**Standard
Connection
Euro Connector**



**EASYFIT
Connection**



**Bevel Tool
Patent pending**



Replacement Parts

Torch parts

Item#	Code	Description
	H M	
1	01001/KIT	Torch Head complete with handle
2	● 01001	Hand torch head
2a	● ● 01000.60	O - Ring
3	● 09606	Handgrip with microswitch
3a	● 07301.20	Switch
4	● 03300	Machine torch head
5	● 03310	Machine handle
6	● ● 52512/L	Electrode - Hf.
7	● ● 60001	Swirl ring
8	● 51100	Tip ø 1.0
	51095	Tip long life ø 1.0
	51100/S	Tip long life ø 1.1
9	● 51099	Flat tip ø 1.0
10	51098	Conical tip ø 1.0 (Lo - Amp.)
11	01090.42	Extended diffusor
12	52513/L	Extended electrode - Hf.
13	51102	Extended tip, ø 1.0
	51095/L	Extended tip, long life ø 1.0
	51102/S	Extended tip, long life ø 1.1
14	51101	Extended conical tip ø 1.0 (Lo - Amp.)
15	51090	Extended tip long life ø 1.0 (for use with item 19 only)
16	51091	Extended tip long life ø 1.1 (for use with item 19 and 20 only)
17	● ● 60320	Nozzle retaining cap
18	51965	Shield cup, hand (for tips item 13 and 14 only)
19	51966	Shield cup, hand (for tips item 15 and 16 only)
20	51973	Spacer contact cutting, (for tips item 15 and 16 only)
21	60368	Wrench for diffusor

Accessories

N/S	51850	Circle cutting attachment
22	51883	BEVEL TOOL

Torches and Leads

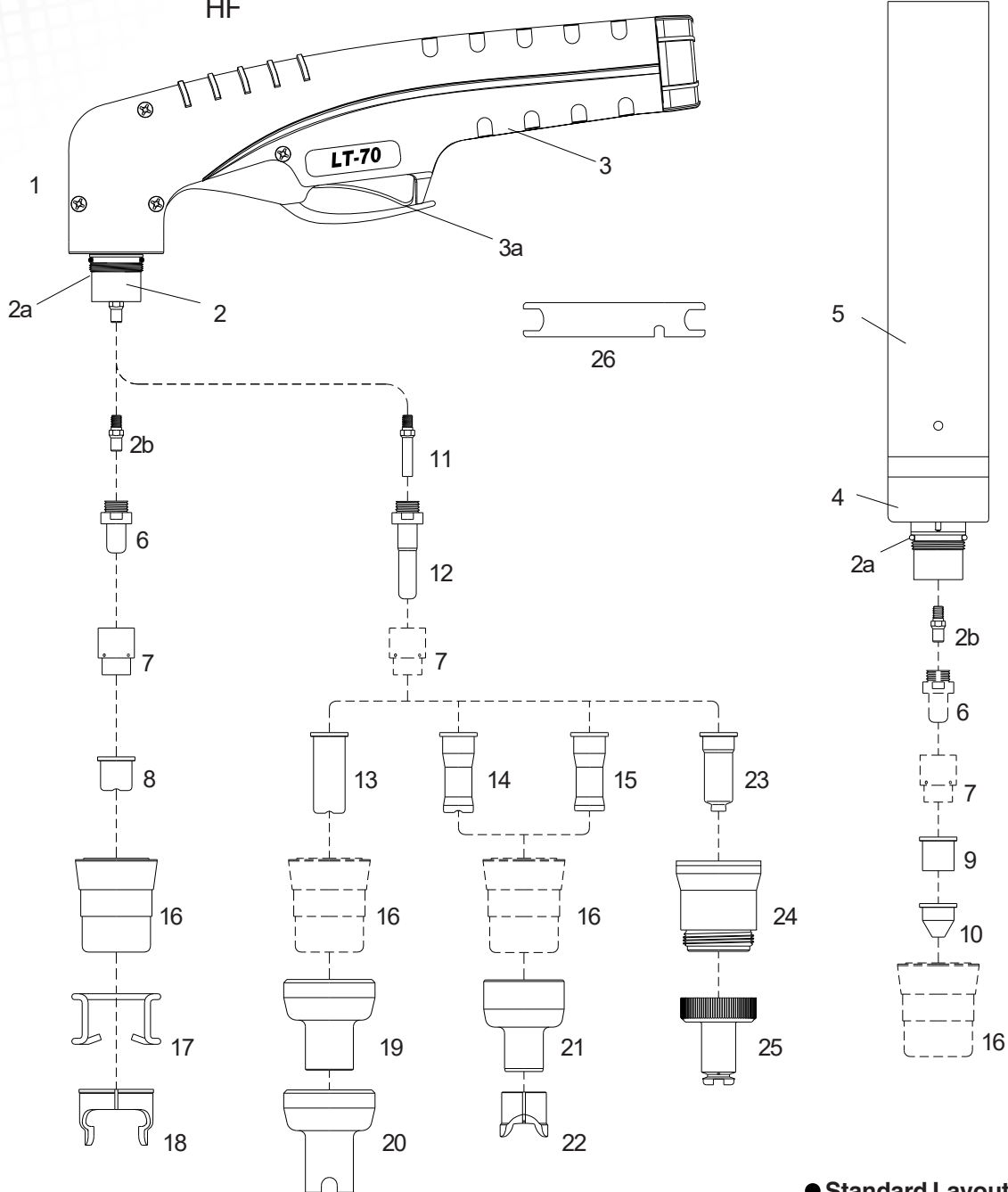
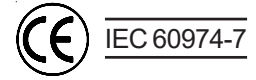
see page # 14



LT-70 M70

Technical Data

Max Current:	70 Amps
Duty Cycle:	70 Amps - 60%
Gas:	Air
Gas Pressure:	70 psi (4.5-5.0 bar)
Gas Flow:	360 scfh (170 lpm)
Post Flow Time:	30 sec. recommended
Pilot :	Electrode to Tip
Ignition:	HF



● Standard Layout
 H - Hand Torch
 M - Machine Torch



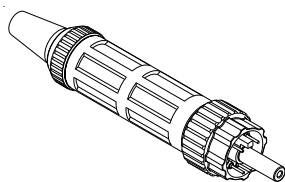
LT-70 M70

Air or N₂

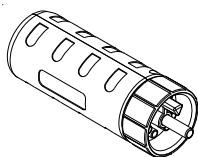
**Air Filter
AT-1000**



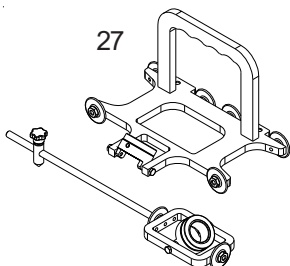
**Standard
Connection
Euro Connector**



**EASYFIT
Connection**



Bevel Tool
Patent pending



Replacement Parts

Torch parts

Item#	H	M	Code	Description
1			01071/KIT	Torch Head complete with handle
2	●		01071	Hand torch head
2a	●	●	01000.60	O - Ring
2b	●	●	01070.42	Diffusor
3	●		09606	Handgrip with microswitch
3a	●		07301.20	Switch
4		●	03370	Machine torch head
5		●	03310	Machine handle
6	●	●	52551	Electrode
7	●	●	60001	Swirl ring
8			51100.09	Tip ø 0.9 - 35A
			51095	Tip long life ø 1.0 - 50A
			51100/S	Tip long life ø 1.1 - 60A
	●		51096	Tip long life ø 1.2 - 70A
9			51099	Flat tip ø 1.0
		●	51099.12	Flat tip ø 1.2
10			51098	Conical tip ø 1.0
			51098.12	Conical tip ø 1.2
11			01090.42	Extended diffusor
12			52553	Extended electrode
13			51102.09	Extended tip ø 0.9 - 35A
			51095/L	Extended tip long life ø 1.0 - 50A
			51102/S	Extended tip long life ø 1.1 - 60A
			51096/L	Extended tip long life ø 1.2 - 70A
14			51090	Extended tip long life 20-40A (for use with item 22 only)
15			51091	Extended tip long life ø 1.1, 60A (for use with item 22 & 23 only)
			51092	Extended tip long life ø 1.2, 70A (for use with item 22 and 23 only)
16	●	●	60321	Nozzle retaining cap
17	●		51901	Spacerspring
18			60363	Double pointed spacer
19			51970	Shield cup, hand (for extended tip 51095/L)
20			51971	Spacer for contact cutting, hand (for tips 51102/S and 51096/L)
21			51966	Shield cup, hand (for tips item 14 and 15 only)
22			51973	Spacer for contact cutting, hand (for tips item 14 and 15 only)
23			51097.10	Extended Tip, 50A, Shielded
			51097.11	Extended Tip, 60A, Shielded
			51097.12	Extended Tip, 70A, Shielded
24			60321C	Shield Cup Body CW
25			60503L	Extended Shield Cap 50-70A
26	●	●	60368	Wrench for electrode

Accessories

N/S	51849	Circle cutting attachment
27	51883	BEVEL TOOL

Torches and Leads

see page # 14



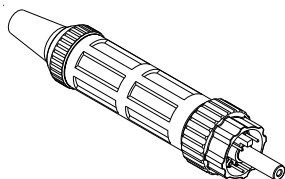
LT-100 M-100

Air or N₂

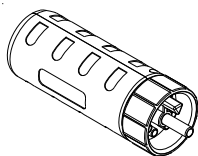
**Air Filter
AT-1000**



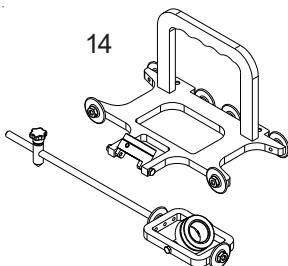
**Standard
Connection
Euro Connector**



**EASYFIT
Connection**



**Bevel Tool
Patent pending**



Replacement Parts

Torch parts

Item#	H	M	Code	Description
1			01076/KIT	Torch Head complete with handle
2	●		01076	Hand torch head
2a	●	●	01000.60	O - Ring
2b	●	●	01090.42	Diffusor
3	●		09606	Handgrip with microswitch
3a	●		07301.20	Switch
4		●	03375	Machine torch head
5		●	03310	Machine handle
6	●	●	52553	Electrode
7	●	●	60001	Swirl ring
8			51090	Tip long life ø 1.0 -20-40A (for use with item 11 only)
9			51091	Tip long life ø 1.1 - 60A (for use with item 11-12 only)
			51092	Tip long life ø 1.2 - 70A (for use with item 11-12 only)
	●	●	51093	Tip long life ø 1.3 - 90-100A (for use with item 11-12 only)
			10	● ● 60321 Nozzle retaining cap
11	●	●	51972	Shield cup, hand
12	●		51973	Spacer for contact cutting, hand
13			51097.10	Extended Tip, 50A, Shielded
			51097.11	Extended Tip, 60A, Shielded
			51097.12	Extended Tip, 70A, Shielded
			51097.13	Extended Tip, 90-100A, Shielded
14			60321C	Shield Cup Body CW
15			60503L	Extended Shield Cap 50-70A
16			60504L	Extended Shield Cap 80-100A
13	●	●	60368	Wrench for electrode

Accessories

N/S	51848	Circle cutting attachment
14	51883	BEVEL TOOL

Torches and Leads

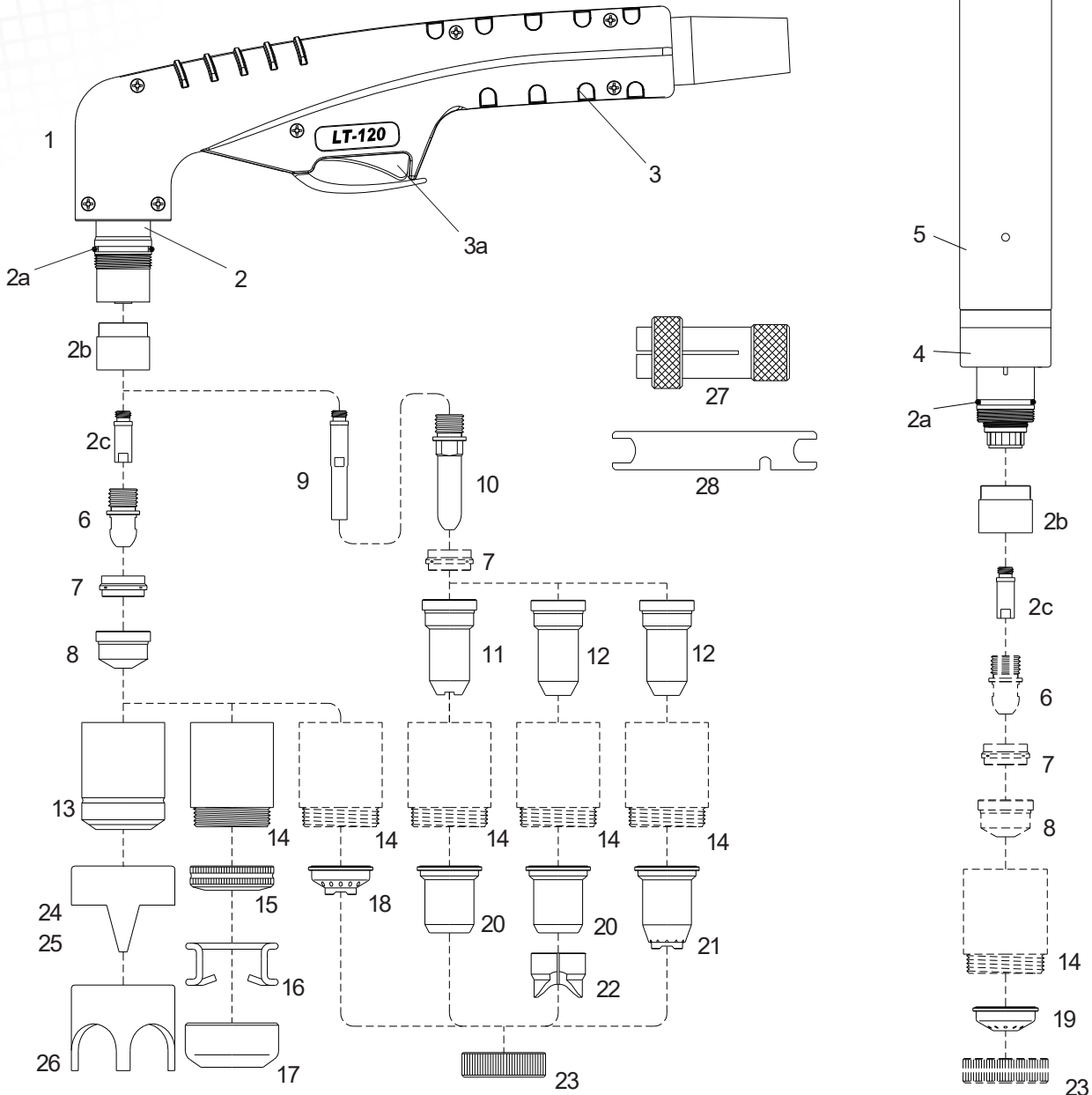
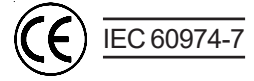
see page # 15



LT-120 M-120

Technical Data

Max Current:	120 Amps
Duty Cycle:	120 Amps - 60%
Gas:	Air
Gas Pressure:	70 psi (4.5-5.0 bar)
Gas Flow:	380 scfh (180 lpm)
Post Flow Time:	30 sec. recommended
Pilot:	Electrode to Tip
Ignition:	HF



● Standard Layout
 H - Hand Torch
 M - Machine Torch



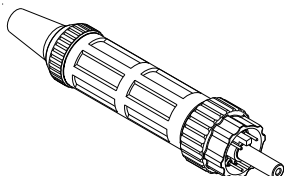
LT-120 M-120

Air or N₂

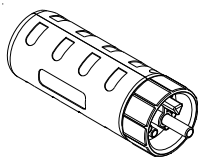
**Air Filter
AT-1000**



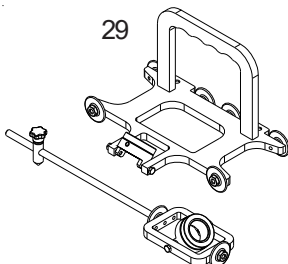
**Standard
Connection
Euro Connector**



**EASYFIT
Connection**



Bevel Tool
Patent pending



Replacement Parts

Torch parts

Item#	H	M	Code	Description
1			01201/KIT	Torch Head complete with handle
2	●		01201	Hand torch head
2a	●	●	02000.60	O - Ring
2b	●	●	60085	Front insulator
2c	●	●	06004	Diffusor
3	●		09706	Handgrip with microswitch
3a	●		07301.20	Switch
4		●	01400	Machine torch head
5		●	03310	Machine handle
6	●	●	52540	Electrode
7	●	●	60020	Swirl ring
8			51140/S	Tip long life ø 1,10
			51141/S	Tip long life ø 1,35
	●	●	51142/S	Tip long life ø 1,60
			51144.24	Gouging tip ø 2,4
9			06005	Extended diffusor
10			52549	Extended electrode
11			51148	Extended tip (for contact cutting max. 50A)
12			51148.13	Extended tip ø 1,35 - 90A - (for 51958 + 51959 or 60380)
			51148.16	Extended tip ø 1,6 - 120A - (for 51958 + 51959 or 60380)
13			60328	Nozzle retaining cap
14	●	●	60348	Contact nozzle retaining cap
			60348/V	Contact nozzle retaining cap, Max.life
15	●		51952	Spring holder protection nut
16	●		51911	Spacer spring for code 51952
17			51953	Gouging spacer
18			51950	Spacer for contact cutting, hand (for use with item 8 only)
19		●	51951	Shield cup, machine (for use with item. 6 only)
20			51957	Shield cup, hand (max. 50A)
21			51958	Spacer for contact cutting, hand
22			51974	Spacer for extended tips High Amp.
23		●	51959	Locking nut
24			60370	Double pointed spacer
25			60414	Double pointed spacer <i>NEW</i>
26			60371	Crown spacer
27			60369	Extractor for swirl ring
28	●	●	60368	Wrench for electrode

Accessories

N/S	51851	Circle cutting attachment
29	51885	BEVEL TOOL

Torches and Leads

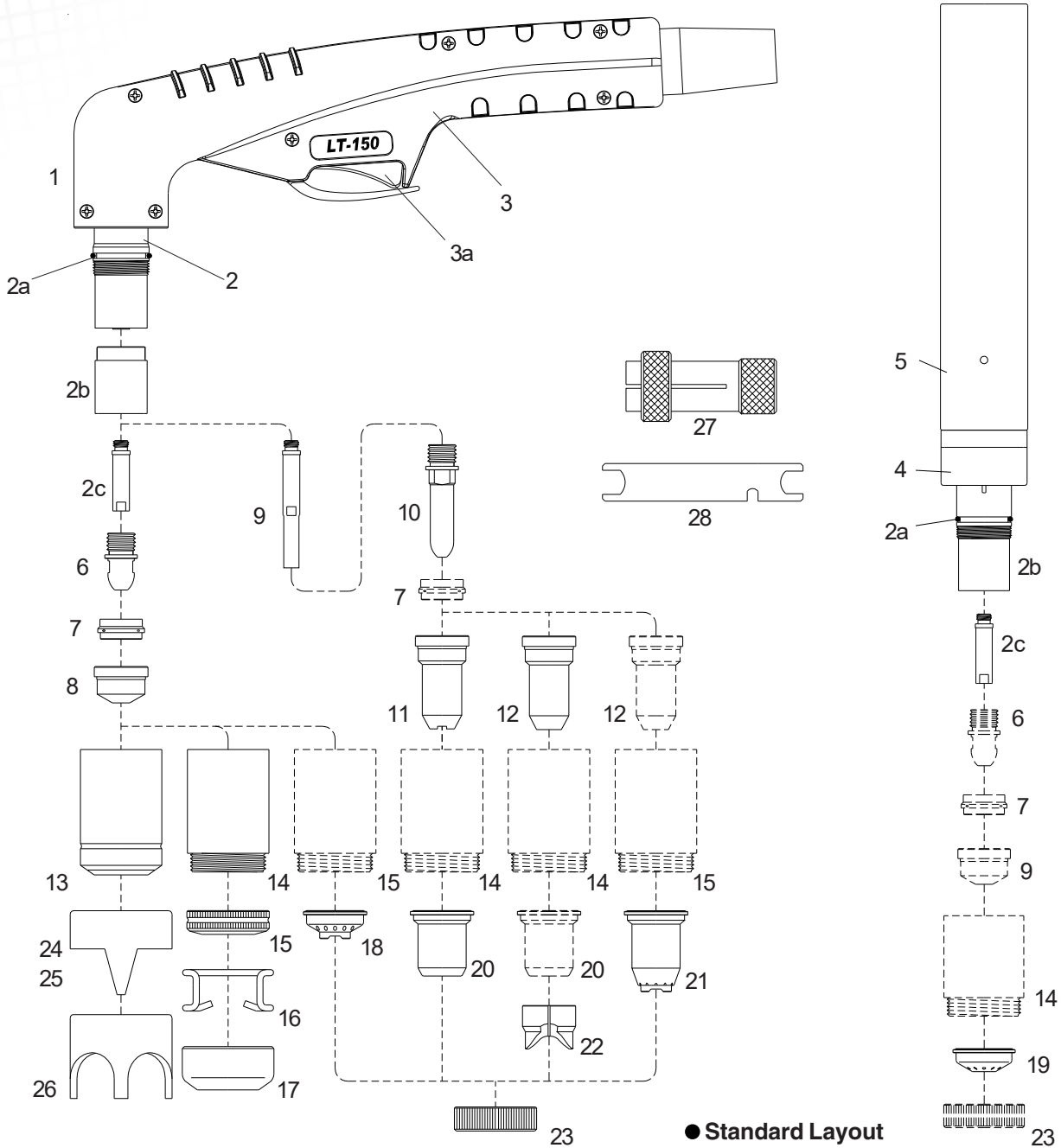
see page # 15



LT-150 M-150

Technical Data

Max Current:	150Amps
Duty Cycle:	150 Amps - 60%
Gas:	Air
Gas Pressure:	70 psi (4.5-5.0 bar)
Gas Flow:	470 scfh (220 lpm)
Post Flow Time:	30 sec. recommended
Pilot:	Electrode to Tip
Ignition:	HF



● Standard Layout
 H - Hand Torch
 M - Machine Torch



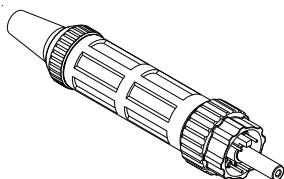
LT-150 M-150

Air or N₂

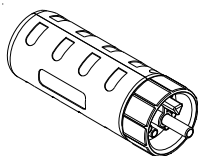
**Air Filter
AT-1000**



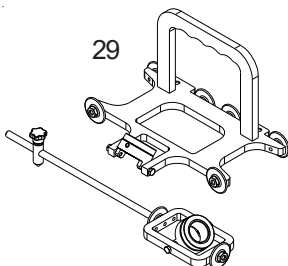
**Standard
Connection
Euro Connector**



**EASYFIT
Connection**



**Bevel Tool
Patent pending**



Replacement Parts

Torch parts

Item#	Code	Description
H	M	
1		02001/KIT Torch Head complete with handle
2	●	02001 Hand torch head
2a	● ●	02000.60 O - Ring
2b	● ●	60080 Front insulator
2c	● ●	05004 Diffusor
3	●	09706 Handgrip with microswitch
3a	●	07301.20 Switch
4	●	04300 Machine torch head
5	●	03310 Machine handle
6	● ●	52540 Electrode
7	● ●	60020 Swirl ring
8		51140/S Tip long life ø 1,10
		51141/S Tip long life ø 1,35
		51142/S Tip long life ø 1,60
	● ●	51143/S Tip long life ø 1,80
		51144 Gouging tip ø 3.0
9		05005 Extended diffusor
10		52549 Extended electrode
11		51148 Extended tip (for contact cutting max. 50A)
12		51148.13 Extended tip ø 1,35 - 90A - (for 51958 + 51959 or 60380)
		51148.16 Extended tip ø 1,6 - 120A - (for 51958 + 51959 or 60380)
		51148.18 Extended tip ø 1,8 - 150A - (for 51958 + 51959 or 60380)
13		60330 Nozzle retaining cap
14	● ●	60350 Contact nozzle retaining cap
		60350/V Contact nozzle retaining cap, Max.life
15	●	51952 Spring holder protection nut
16	●	51911 Spacer spring for code 51952
17		51953 Gouging spacer
18		51950 Spacer for contact cutting, hand (for use with item 8 only)
19	●	51951 Shield cup, machine (for use with item. 6 only)
20		51957 Shield cup, hand (max. 50A)
21		51958 Spacer for contact cutting, hand
22		51974 Spacer for extended tips High Amp.
23	●	51959 Locking nut
24		60370 Double pointed spacer
25		60414 Double pointed spacer <i>NEW</i>
26		60371 Crown spacer
27		60369 Extractor for swirl ring
28	● ●	60368 Wrench for electrode

Accessories

N/S	51851	Circle cutting attachment
29	51885	BEVEL TOOL

Torches and Leads

see page # 15



LT-Torches

H-35

	<i>Code</i>	<i>Description</i>
H 35	02900	Hand torch complete with 4 mts cable (1/8" connection)
	02910	Hand torch complete with 6 mts cable (1/8" connection)
	02980	Air and power cable 4 mts 1/8"
	02985	Air and power cable 6 mts 1/8"

LT-50 MT-50

	<i>Code</i>	<i>Description</i>
LT-50	03050LT	Hand torch complete with 6 mts cable (1/8" connection)
	03051LT	Hand torch complete with 6 mts cable (central connector)
	03150LT	Hand torch complete with 12 mts cable (1/8" connection)
	03151LT	Hand torch complete with 12 mts cable (central connector)
	03240	Air and power cable 6 mts 1/8"
	03250	Air and power cable 12 mts 1/8"
MT50	03401	Machine torch complete with 6 mts cable (central connector)
	03501	Machine torch complete with 12 mts cable (central connector)
	03320	Air and power cable 6 mts 1/8"
	03330	Air and power cable 12 mts 1/8"

LT-70 MT-70

	<i>Code</i>	<i>Description</i>
LT-70	03071LT	Hand torch complete with 6 mts cable (central connector)
	03171LT	Hand torch complete with 12 mts cable (central connector)
	03240	Air and power cable 6 mts 1/8"
	03250	Air and power cable 12 mts 1/8"
MT70	03471	Machine torch complete with 6 mts cable (central connector)
	03571	Machine torch complete with 12 mts cable (central connector)
	03320	Air and power cable 6 mts 1/8"
	03330	Air and power cable 12 mts 1/8"



LT-Torches

LT-100 MT-100

	<i>Code</i>	<i>Description</i>
LT-100	03081LT	Hand torch complete with 6 mts cable (central connector)
	03181LT	Hand torch complete with 12 mts cable (central connector)
	03092	Air and power cable 6 mts 1/8" (1/8" connection)
	03192	Air and power cable 12 mts 1/8" (1/8" connection)
MT100	03481	Machine torch complete with 6 mts cable (central connector)
	03581	Machine torch complete with 12 mts cable (central connector)
	03492	Air and power cable 6 mts 1/8"
	03592	Air and power cable 12 mts 1/8"

LT-120 MT-120

	<i>Code</i>	<i>Description</i>
LT-120	01251LT	Hand torch complete with 6 mts cable (central connector)
	01351LT	Hand torch complete with 12 mts cable (central connector)
	04240	Air and power cable 6 mts 1/8" (1/8" connection)
	04250	Air and power cable 12 mts 1/8" (1/8" connection)
MT120	01451	Machine torch complete with 6 mts cable (central connector)
	01551	Machine torch complete with 12 mts cable (central connector)
	04320	Air and power cable 6 mts 1/8"
	04330	Air and power cable 12 mts 1/8"

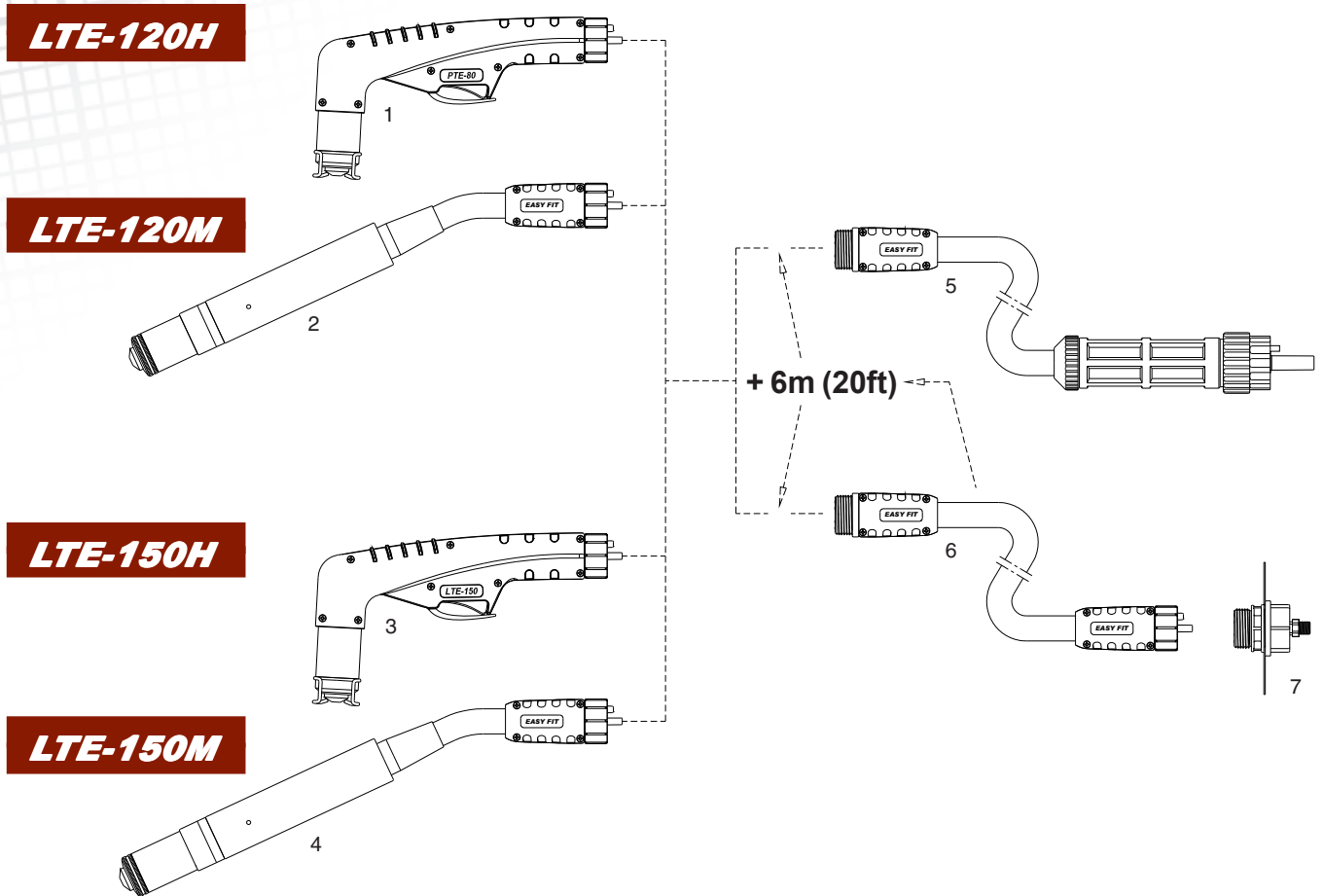
LT-150 MT-150

	<i>Code</i>	<i>Description</i>
LT-150	04051LT	Hand torch complete with 6 mts cable (central connector)
	04151LT	Hand torch complete with 12 mts cable (central connector)
	04240	Air and power cable 6 mts 1/8" (1/8" connection)
	04250	Air and power cable 12 mts 1/8" (1/8" connection)
MT150	04401	Machine torch complete with 6 mts cable (central connector)
	04501	Machine torch complete with 12 mts cable (central connector)
	04320	Air and power cable 6 mts 1/8" (1/8" connection)
	04330	Air and power cable 12 mts 1/8" (1/8" connection)

Torches with different cable cover and connectors available on request.



EASYFIT System



Torch heads & leads

Item #	Description	Code #
1	LTE-120H Hand torch head EASY FIT, w/ handle & parts.	01201E
2	LTE-120M Machine torch head EASY FIT, w/positioning tube & parts	01400E
3	LTE-150H Hand torch head EASY FIT, w/ handle & parts.	02001E
4	LTE-150M Machine torch head EASY FIT, w/positioning tube & parts	04300E
5	Lead Assembly, 6m (20 ft) EASY FIT, Coaxial Cable with Euro Connector	09781FX
	Lead Assembly, 12m (40 ft) EASY FIT, Coaxial Cable with Euro Connector	09786FX
6	Extension, 6m (20 ft), complete with EASY FIT, Coaxial Cable	05285FX
	Extension, 12m (40 ft), complete with EASY FIT, Coaxial Cable	05287FX
7	EASY FIT Central Connection, Machine Side	05265



LTE-120H

LTE-120M

Air or N₂

Replacement Parts

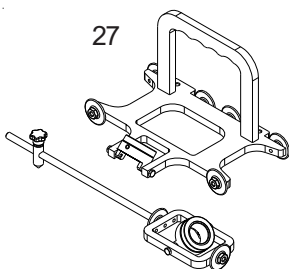
Torch parts

Item#	Code	Description
	H M	
1	● 01201E	LTE-120H Hand torch head EASY FIT , w/ handle & parts.
1a	02000.60	O - Ring
1b	60085	Front insulator
1c	06004	Diffusor
2	09707	Handgrip with microswitch
3	● 01400E	LTE-120M Machine torch head EASY FIT , with tube & parts.
3a	01400	Machine torch head
3b	03310	Positioning Tube
4	● ● 52540	Electrode
5	● ● 60020	Swirl ring
6	51140/S	Tip long life ø 1,10
	51141/S	Tip long life ø 1,35
	● ● 51142/S	Tip long life ø 1,60
	51144.24	Gouging tip ø 2,4
7	06005	Extended diffusor
8	52549	Extended electrode
9	51148	Extended tip (for contact cutting max. 50A)
10	51148.13	Extended tip ø 1,35 - 90A - (for 51958 + 51959 or 60380)
	51148.16	Extended tip ø 1,6 - 120A - (for 51958 + 51959 or 60380)
11	60328	Nozzle retaining cap
12	● ● 60348	Contact nozzle retaining cap
	60348/V	Contact nozzle retaining cap, Max.life
13	● 51952	Spring holder protection nut
14	● 51911	Spacer spring for code 51952
15	51953	Gouging spacer
16	51950	Spacer for contact cutting, hand (for use with item. 6 only)
17	● 51951	Shield cup, machine (for use with item. 6 only)
18	51957	Shield cup, hand (max. 50A)
19	51958	Spacer for contact cutting, hand
20	51974	Spacer for extended tips High Amp.
21	● 51959	Locking nut
22	60370	Double pointed spacer
23	60414	Crown spacer <i>NEW</i>
24	60371	Crown spacer
25	60369	Extractor for swirl ring
26	● ● 60368	Wrench for electrode
Accessories		
N/S	51851	Circle cutting attachment
27	51885	BEVEL TOOL

**Air Filter
AT-1000**



Bevel Tool
Patent pending



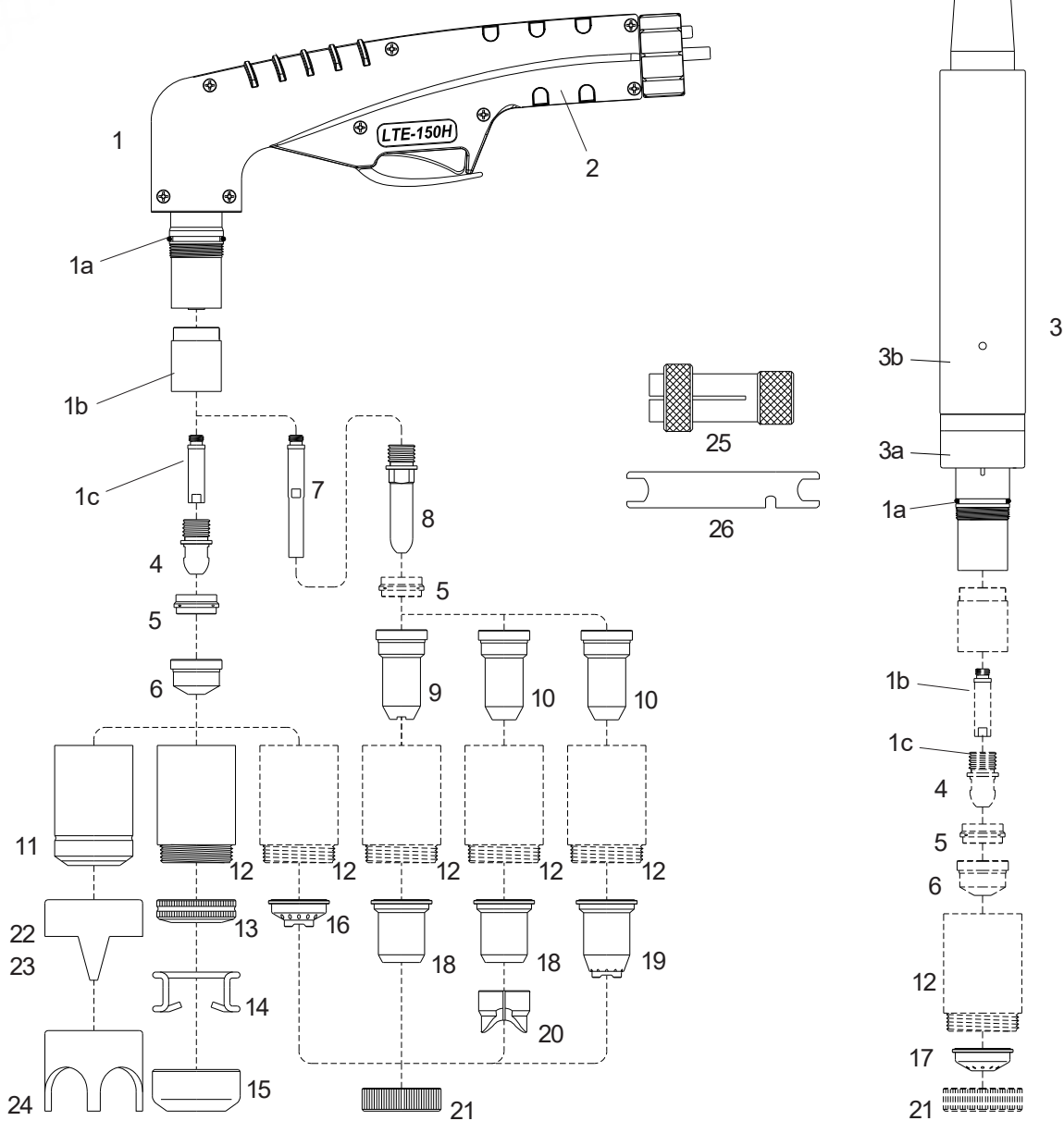


LTE-150H

LTE-150M

Technical Data

Current:	150Amps
Duty Cycle:	150 Amps - 60%
Gas:	Air
Gas Pressure:	70 psi (4.5-5.0 bar)
Gas Flow:	470 scfh (220 lpm)
Post Flow Time:	30 sec. recommended
Pilot:	Electrode to Tip
Ignition:	HF



● Standard Layout



LTE-150H LTE-150M

Replacement Parts

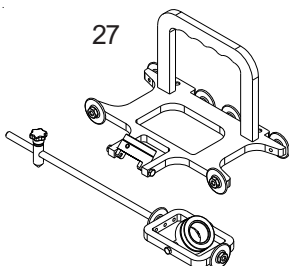
Torch parts

Item#	Code	Description
H	M	
1	● 02001E	LTE-150H Hand torch head EASY FIT , w/ handle & parts.
1a	02000.60	O - Ring
1b	60080	Front insulator
1c	05004	Diffusor
2	09707	Handgrip with microswitch
3	● 04300E	LTE-120M Machine torch head EASY FIT , with tube & parts.
3a	04300	Machine torch head
3b	03310	Positioning Tube
4	● ● 52540	Electrode
5	● ● 60020	Swirl ring
6	51140/S	Tip long life ø 1,10
	51141/S	Tip long life ø 1,35
	51142/S	Tip long life ø 1,60
	● ● 51143/S	Tip long life ø 1,80
	51144	Gouging tip ø 3.0
7	05005	Extended diffusor
8	52549	Extended electrode
9	51148	Extended tip (for contact cutting max. 50A)
10	51148.13	Extended tip ø 1,35 - 90A - (for 51958 + 51959 or 60380)
	51148.16	Extended tip ø 1,6 - 120A - (for 51958 + 51959 or 60380)
	51148.18	Extended tip ø 1,8 - 150A - (for 51958 + 51959 or 60380)
11	60330	Nozzle retaining cap
12	● ● 60350	Contact nozzle retaining cap
	60350/V	Contact nozzle retaining cap, Max.life
13	● 51952	Spring holder protection nut
14	● 51911	Spacer spring for code 51952
15	51953	Gouging spacer
16	51950	Spacer for contact cutting, hand (for use with item. 6 only)
17	● 51951	Shield cup, machine (for use with item. 6 only)
18	51957	Shield cup, hand (max. 50A)
19	51958	Spacer for contact cutting, hand
20	51974	Spacer for extended tips High Amp.
21	● 51959	Locking nut
22	60370	Double pointed spacer
23	60414	Double pointed spacer <i>NEW</i>
24	60371	Crown spacer
25	60369	Extractor for swirl ring
26	● ● 60368	Wrench for electrode
Accessories		
N/S	51851	Circle cutting attachment
27	51885	BEVEL TOOL

Air Filter
AT-1000



Bevel Tool
Patent pending



Technical Data

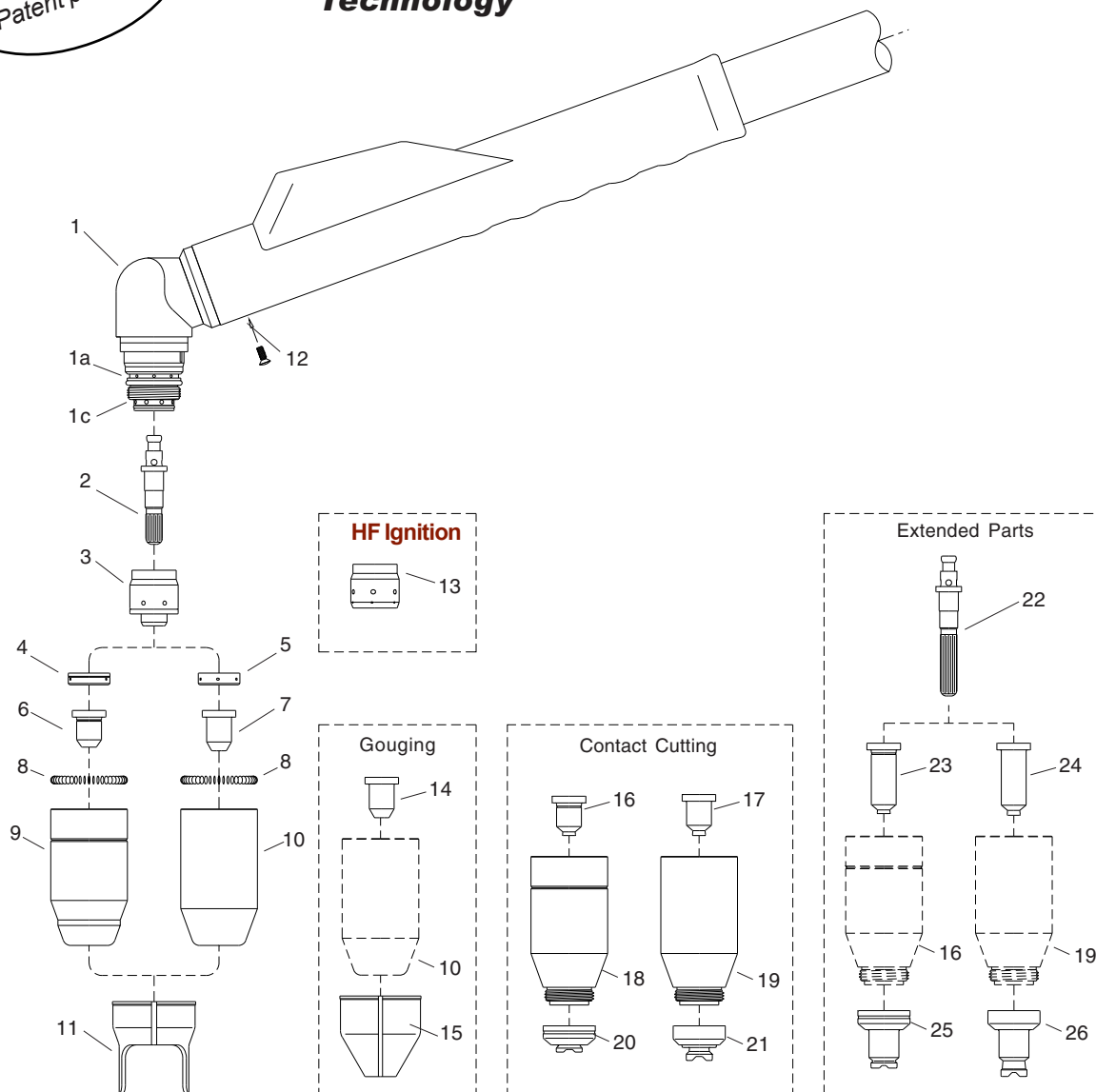
Current :	150 Amps
Duty Cycle:	120 Amps - 60%
Gas:	Air/N2
Gas Pressure:	70-80 PSI (4.8-5.0 bar)
Gas Flow:	420 SCFH (200 lpm)
Pilot :	Electrode to Tip
Ignition With HF:	Max 30 Amps
Ignition Without HF:	Max 30 Amps. Short circuit



**with and without
High Frequency Start**



**With
EUROLOK™
Technology**



**Torches with different cable cover & connectors
available on request.**



EL-60

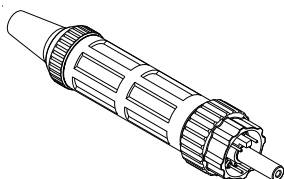
Air or N₂

● Standard Layout

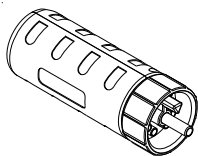
Air Filter
AT-1000



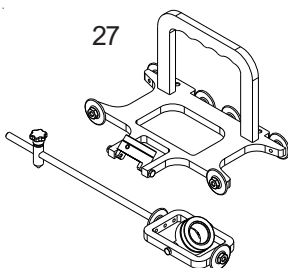
Standard
Connection
Euro Connector



EASYFIT
Connection



Bevel Tool
Patent pending



Replacement Parts

Torch parts

Item#	Code	Description
1	● 07925	EL-60 70° Torch Head
1b	● 07300.60	O-Ring
1c	● 07925.60	O-Ring
2	● 52601	Electrode, Air/N ₂
3	● 07928	Start Cartridge, 20/120 A
4	60060	Gas Distributor, 20/60 A
5	● 60061	Gas Distributor, 60/120 A
6	51470	Tip, Cutting, Air/N ₂ , 20/30 A
	51471	Tip, Cutting, Air/N ₂ , 40 A
	51472	Tip, Cutting, Air/N ₂ , 50/60 A
7	51474	Tip, Cutting, Air/N ₂ , 60 A
	51475	Tip, Cutting, Air/N ₂ , 70 A
	51476	Tip, Cutting, Air/N ₂ , 80 A
	51477	Tip, Cutting, Air/N ₂ , 90/100 A
	● 51478	Tip, Cutting, Air/N ₂ , 120 A
8	● 60442	Coil Spring
9	60480	Shield Cup, Standard 20/60 A (including Item # 8)
10	● 60481	Shield Cup, Standard 60/120 A (including Item # 8)
11	● 60444	Double Pointed Spacer
12	● 07106E	Handle with Micro-switch

Torches and Leads

09211	EL-60	70° Hand Torch, 6m (20 ft) Leads
09216	EL-60	70° Hand Torch, 12m (40 ft) Leads
09286	EL-60	70° Lead Assembly, 6m (20 ft) Length
09288	EL-60	70° Lead Assembly, 12m (40 ft) Length

Accessories

13	07929	Insulator HF, 20/120 Amp.
14	51478.24	Tip, Gouging, 100/120A
15	60448	Shield Cap, Gouging
16	51480	Contact Tip, Air/N ₂ , 20/30 A
	51481	Contact Tip, Air/N ₂ , 40 A
	51482	Contact Tip, Air/N ₂ , 50/60 A
17	51484	Contact Tip, Air/N ₂ , 60 A
	51485	Contact Tip, Air/N ₂ , 70 A
	51486	Contact Tip, Air/N ₂ , 80 A
	51487	Contact Tip, Air/N ₂ , 90/100 A
	51488	Contact Tip, Air/N ₂ , 120 A
18	60482	Shield Cup Body, 20/60 A (including Item # 8)
19	60483	Shield Cup Body, 60/120 A (including Item # 8)
20	60485	Shield Cap, Hand, 20/60 A
21	60486	Shield Cap, Hand, 60/120 A
22	52602	Extended Electrode, Air/N ₂
23	51490	Extended Contact Tip, Air/N ₂ , 20/30 A
	51491	Extended Contact Tip, Air/N ₂ , 40 A
	51492	Extended Contact Tip, Air/N ₂ , 50/60 A
24	51493	Extended Contact Tip, Air/N ₂ , 60 A
	51494	Extended Contact Tip, Air/N ₂ , 70 A
	51495	Extended Contact Tip, Air/N ₂ , 80 A
	51496	Extended Contact Tip, Air/N ₂ , 90/100 A
	51497	Extended Contact Tip, Air/N ₂ , 120 A
25	60490	Extended Shield Cap, Hand, 20/60 A
26	60491	Extended Shield Cap, Hand, 60/120 A
N/S	51864	Circle Cutting Attachment
27	51887	BEVEL TOOL

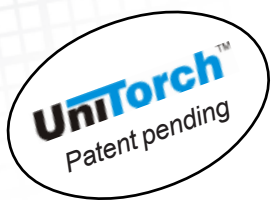
TEC.MO.®

EL-60

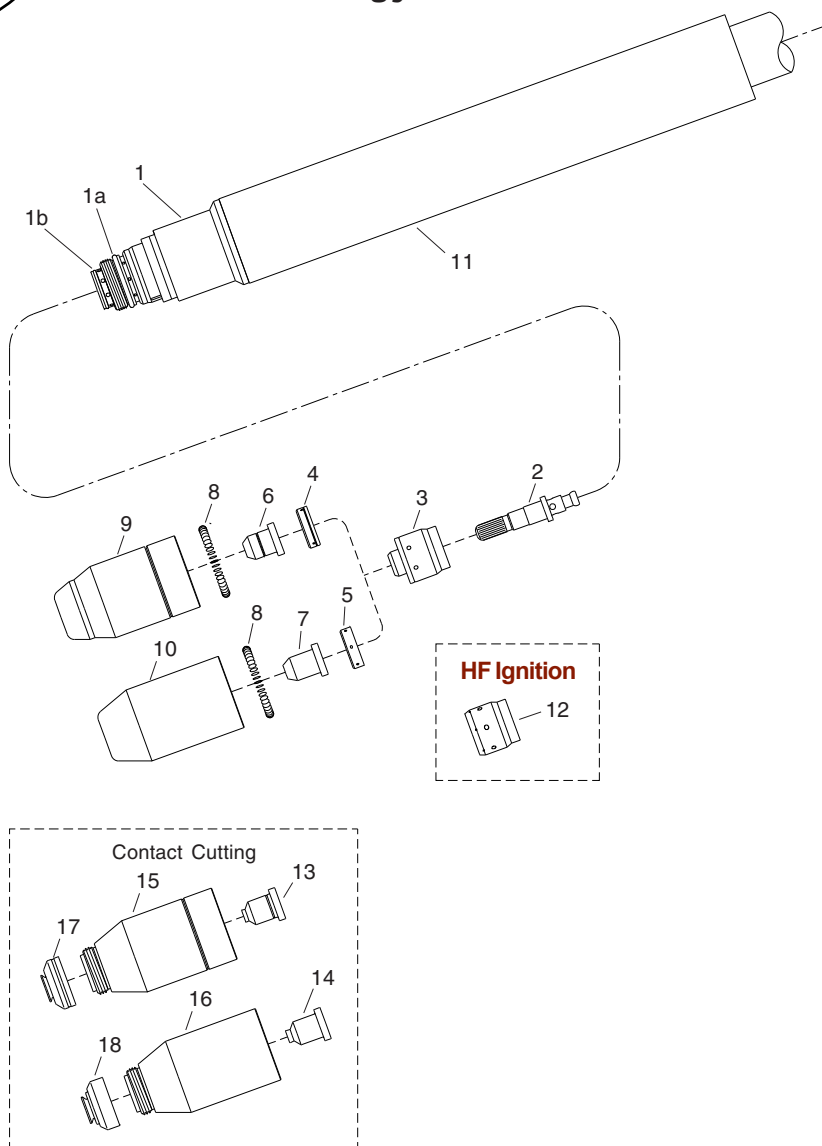
Technical Data

Current :	150 Amps
Duty Cycle:	120 Amps - 60%
Gas:	Air/N2
Gas Pressure:	70-80 PSI (4.8-5.0 bar)
Gas Flow:	420 SCFH (200 lpm)
Pilot :	Electrode to Tip
Ignition With HF:	Max 30 Amps
Ignition Without HF:	Max 30 Amps. Short circuit

**with and without
High Frequency Start**



**With
EUROLOK™
Technology**





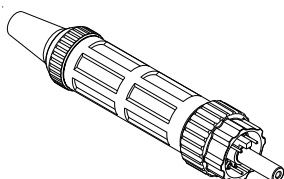
EL-60

Air or N₂

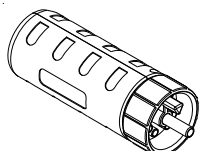
**Air Filter
AT-1000**



**Standard
Connection
Euro Connector**



**EASYFIT
Connection**



Replacement Parts

Torch parts

Item#	Code	Description
1	● 07926	EL-60 180° Torch Head
1b	● 07300.60	O-Ring
1c	● 07925.60	O-Ring
2	● 52601	Electrode, Air/N ₂
3	● 07928	Start Cartridge, 20/120 A
4	60060	Gas Distributor, 20/60 A
5	● 60061	Gas Distributor, 60/120 A
6	51470	Tip, Cutting, Air/N ₂ , 20/30 A
	51471	Tip, Cutting, Air/N ₂ , 40 A
	51472	Tip, Cutting, Air/N ₂ , 50/60 A
7	51474	Tip, Cutting, Air/N ₂ , 60 A
	51475	Tip, Cutting, Air/N ₂ , 70 A
	51476	Tip, Cutting, Air/N ₂ , 80 A
	51477	Tip, Cutting, Air/N ₂ , 90/100 A
	● 51478	Tip, Cutting, Air/N ₂ , 120 A
8	● 60442	Coil Spring
9	60480	Shield Cup, Standard 20/60 A (including Item # 8)
10	● 60481	Shield Cup, Standard 60/120 A (including Item # 8)
11	● 07215	Fiberglass Positioning Tube

Torches and Leads

09221	EL-60 180° Machine Torch, 6m (20 ft) Leads
09231	EL-60 180° Machine Torch, 12m (40 ft) Leads
09291	EL-60 180° Lead Assembly, 6m (20 ft) Length
09296	EL-60 180° Lead Assembly, 12m (40 ft) Length

Accessories

12	07929	Insulator HF, 20/120 Amp.
13	51480	Contact Tip, Air/N ₂ , 20/30 A
	51481	Contact Tip, Air/N ₂ , 40 A
	51482	Contact Tip, Air/N ₂ , 50/60 A
14	51484	Contact Tip, Air/N ₂ , 60 A
	51485	Contact Tip, Air/N ₂ , 70 A
	51486	Contact Tip, Air/N ₂ , 80 A
	51487	Contact Tip, Air/N ₂ , 90/100 A
	51488	Contact Tip, Air/N ₂ , 120 A
15	60482	Shield Cup Body, 20/60 A (including Item # 8)
16	60483	Shield Cup Body, 60/120 A (including Item # 8)
17	60487	Shield Cap, Machine, 20/60 A
18	60488	Shield Cap, Machine, 60/120 A

**Torches with different cable cover & connectors
available on request.**

35+
Years

TECMO.
=

Quality
Technology
Innovation